

Editor



20 June 2018

Dear,

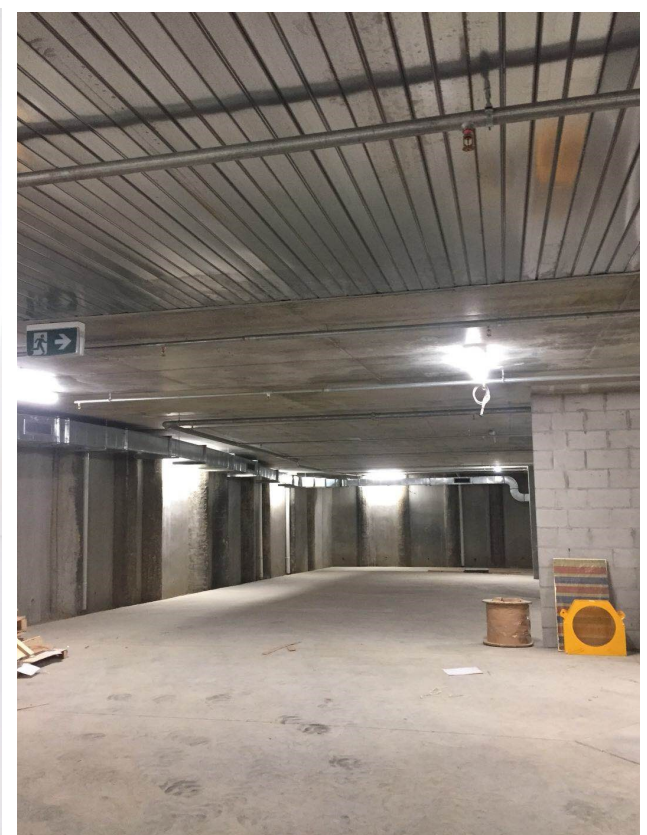
Welcome to the June update of Editor Moonee Ponds!

Construction at Editor Moonee Ponds is progressing well and it is still on track for completion in mid of October 2018.

Construction Update

- Ground floor and level 1 partition wall complete
- Level 2 and Level 3 partition wall are progressing
- Door frames and window frames complete
- Roof installation complete
- Façade installation complete

These are the recent photos of Editor Moonee Ponds.



GETTING READY FOR SETTLEMENT

Settlement is fast approaching and your finance application should be underway for your new apartment.

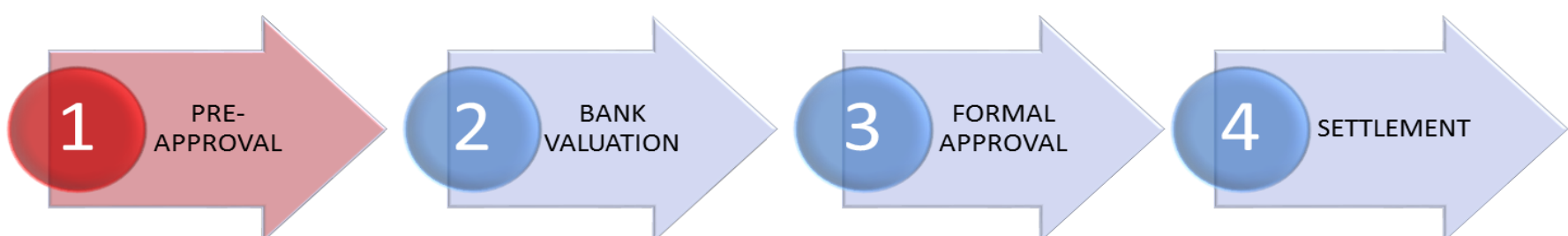
If you not already started the process of seeking finance, now is the time to do so.

As you may be aware, local banks are tightening their lending criteria, particularly towards purchasers that are foreign residents.

Therefore it is **vital** you are well prepared to complete the finance process by the settlement date.

There are four phases one of the process and if you have not begun this stage you are already behind.

We will be commencing bank valuation inspections in the coming weeks. We will let you know as soon as we have confirmed dates.



Phase 1

If you required finance for the settlement of your new apartment, please ensure that you have your loan already pre-approved. With a pre-approved loan, there are fewer chances of hiccups with the settlement process.

In preparation, you will need to have on hand the necessary paperwork to support your loan application, such as personal ID, proof of income, copy of your purchase contract, evidence of savings and details of other debts.

Please do not underestimate the amount of time required to complete the finance process. If you have not yet commenced, we recommend contacting your finance broker or lender straight away to begin the process.

We are here to help you through your settlement process. If you would like to discuss your finance options or if you would like some suggestion on finance broker, please contact or call us on +61 413 115 380 (Amanda, settlementsproperty2018@gmail.com, UPS) or 03 9525 0015 (Jovie, Spacious Group).

Regards,

Spacious MP Development Group

T +61 3 9525 0015

A 60 St Kilda Road, St Kilda, VIC 3182

E jovies@spaciousgroup.com.au

Spacious MP Development Group Pty Ltd

