

NEW CHARSFIELD

478 ST. KILDA RD



PROJECT UPDATE

FEBRUARY 2018

Welcome to the new New Charsfield construction update for 2018.

Construction is progressing well with Hamilton Marino Builders having now completed the ground floor and mezzanine floor slab.

Construction of the Level 2 suspended slab has commenced, and the lift core has now reached Level 6.

SITE PHOTO

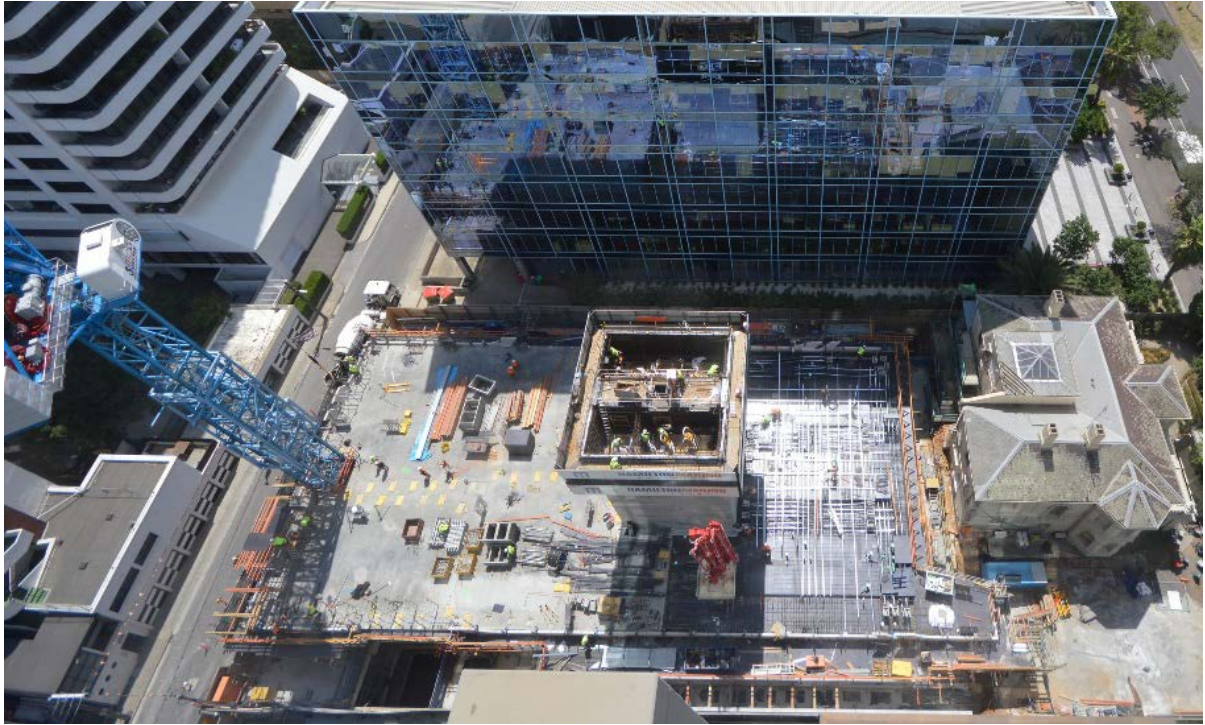


Fig. 1: View from top – Constructing Lift Core & Level 1 slab



Fig. 2: Formworks to Level 1



Fig. 3: Lift core Structure



Fig. 4: Crane and Side View

SETTLEMENT

Settlements remain on in accordance with the anticipated dates provided in our last project update:

STAGE ONE – Level 6 to 16 – expected late January 2019

STAGE TWO – Level 17 and 18 – expected March 2019

CONTACT DETAILS

As we will be sending out regular, important information from now until settlement, we need to ensure we have your correct contact information. If your contact details change, please notify us at enquiries@ebgdevelopemtns.com.au so we may update our records accordingly.



Fig. 5 & 6: Albert Park & City view from crane

EBG
DEVELOPMENTS

H **HAMILTONMARINO**
BUILDERS